

Service Information

MACHINE TYPE : Xg series, YG series except YG12, YG12F and YG300
CLASSIFICATION : INSTALLATION

No: SI1012001E-000
ISSUED DATE: 25 December 2010

Xg, YG series application software upgrade procedure

This document describes how to upgrade the application software of Xg/YG series machines. Any software upgrade versions will apply. This document contains the contents of reference manuals RE0026 and RE0027 with additional section "Preparation".

Warnings

- This document is intended for service engineers. Make sure to use the document under the instruction of those who completed required maintenance training or a YAMAHA service personnel.
- YAMAHA is not responsible for any problems caused by the misuse of the document.
- This document contains system operation that will affect the customer's machine conditions. Make sure to thoroughly understand the contents and perform the procedure on your own responsibility.

Safety note

Strictly follow the safety precautions in the "Safety" section in the user's manual.

Disclaimers

This document contains the preliminary information subject to change in the future.

The information contained in this document represents the current view of YAMAHA on the issues discussed as of the date of issuance. As YAMAHA must respond to changing market conditions, it should not be interpreted to be a commitment on the part of YAMAHA, and YAMAHA cannot guarantee the accuracy of any information presented after the date of issuance.

This document is provided for information purposes only, and it is provided without any warranties, either express or implied.

It is the responsibility of the user to comply with all applicable copyright laws. Without limiting the rights under copyright, no part of this document may be reproduced, stored in or introduced into a retrieval system, or transmitted in any form or by any means (electronic, mechanical, photocopying, recording, or otherwise), or for any purpose, without the written permission of YAMAHA.

However, this shall not be construed to limit the user's right granted by Copyright law.

YAMAHA may have patents, patent applications, trademarks, copyrights, or other intellectual property rights covering subject matter in this document. Except as expressly provided in any written license agreement from YAMAHA, this document does not give users any license to these patents, trademarks, copyrights, or other intellectual property.

The names of actual companies and products mentioned in this document may contain the trademarks of their respective owners.

Service Information

1 Preparation

- **Back up the system data of the machine.**

In the main operation window, select [Setup] > [System Backup] so the System backup dialog box appears. Set a floppy disk or a USB flash memory stick into the machine's designated drive. Then click the [Backup] button under [System] to execute backup process.

Note

Depending on the machine's conditions, the software upgrading may fail, which will require the previous system data to be restored. Therefore be sure to back up the system data before upgrading process. It is also recommended that you back up other necessary data in the machine before upgrading.

- **Prepare the installation CD of the current machine version besides that of the new version.**

Note

Depending on the machine's conditions, the software upgrading may fail, which will require the previous version application to be restored.

- **If you use IT-System, terminate the "YadalService" program before starting upgrading.**

Upgrading cannot be performed unless the "YadalService" program is not terminated beforehand.

Start a Windows Explorer and locate "D:\machine\system\sysd\Stopdal-S.bat". Click the file to terminate YadalService. For further information, contact YAMAHA.

Service Information

2 Application software upgrade procedure

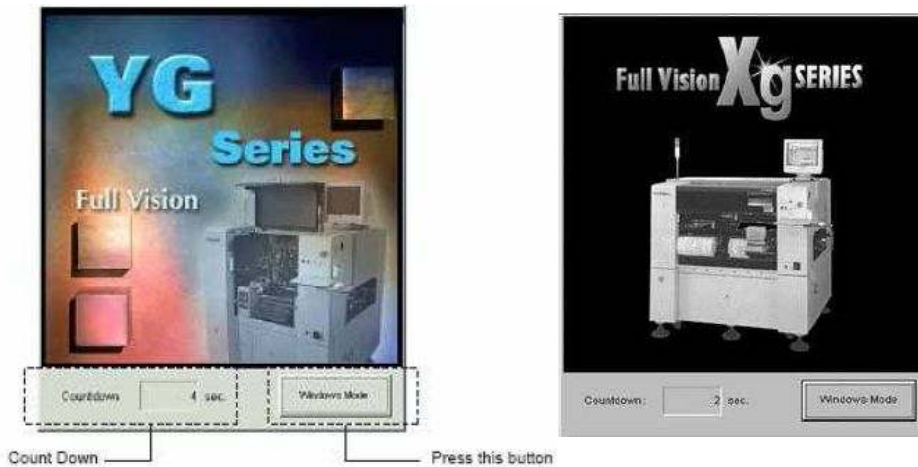
The following procedure is basically designed for the YG series machines, which may slightly differ by software version or machine model.

Step 1 Turn on the machine.

Rotate the main switch clockwise to turn on the machine. In a while Windows starts and the monitor screen turns blue.

Step 2 Click the [Windows Mode] button.

The VGOS2.0 application's initial screen is displayed. Before [Countdown] is counted down to zero, click the [Windows Mode] button.



Step 3 Enter your administrator password.

If you have set your administrator password, enter the password and click [OK]. If Not, just click [OK].



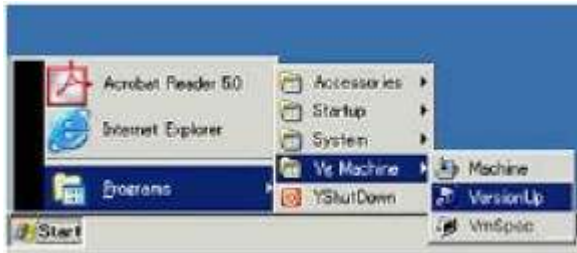
Press "O.K." without setting any passwords.

Step 4 Set the installation CD of the new application software in the machine.

Windows XP's desktop appears. Open the front cover of the machine and set the installation CD in the machine's CD drive.

Service Information

Step 5 Select [VersionUp] from the start menu.
Click the [Start] button, then select [Programs] < [Vg Machine] < [VersionUp].



Note

It will take about 30 seconds before the machine system recognizes the inserted CD.

Caution

If the destination drive (drive D) to contain upgrading files is out of required space, an error message will be issued. If this happens, free up drive D by deleting unnecessary files, then execute [VersionUp].

Step 6 InstallShield Wizard starts.
Click [Next >] and [License Agreement] window appears. Click [Yes] and continue with the instructions.



Step 7 [Spec Update] dialog box appears.
If you have customized your feeder timer information and/or feeder size information, to prevent the information from being overwritten, uncheck the customized item(s).



Check data items to be updated,
uncheck to preserve the existing data.

Service Information

Step 8 Start copying upgrading files.

When [Current setting] is displayed, confirm the displayed contents and click [Next >] to start copying files.

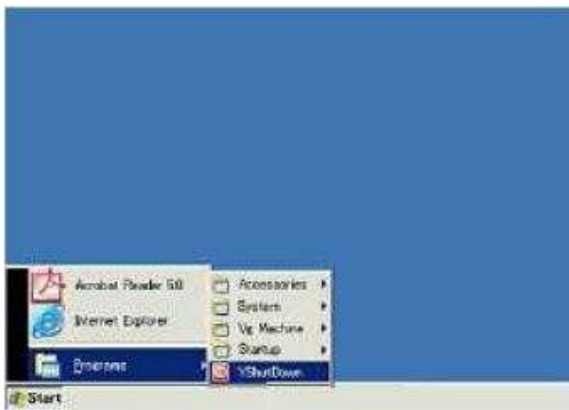
Step 9 Remove the installation CD from the machine.

When the copying is complete, the below window is displayed. Click [Finish] and remove the installation CD from the machine.



Step 10 Turn off the machine.

From the Start menu, select [Programs] > [YShutDown] to open the YshutDown dialog box. Click [Yes] and then “Now machine power can be turned off safely.” is displayed. Turn off the main switch.



Step 11 Confirm updated software version.

Restart the machine. In the main operation window select [Setup] > [SW Version] to confirm the updated software version.